

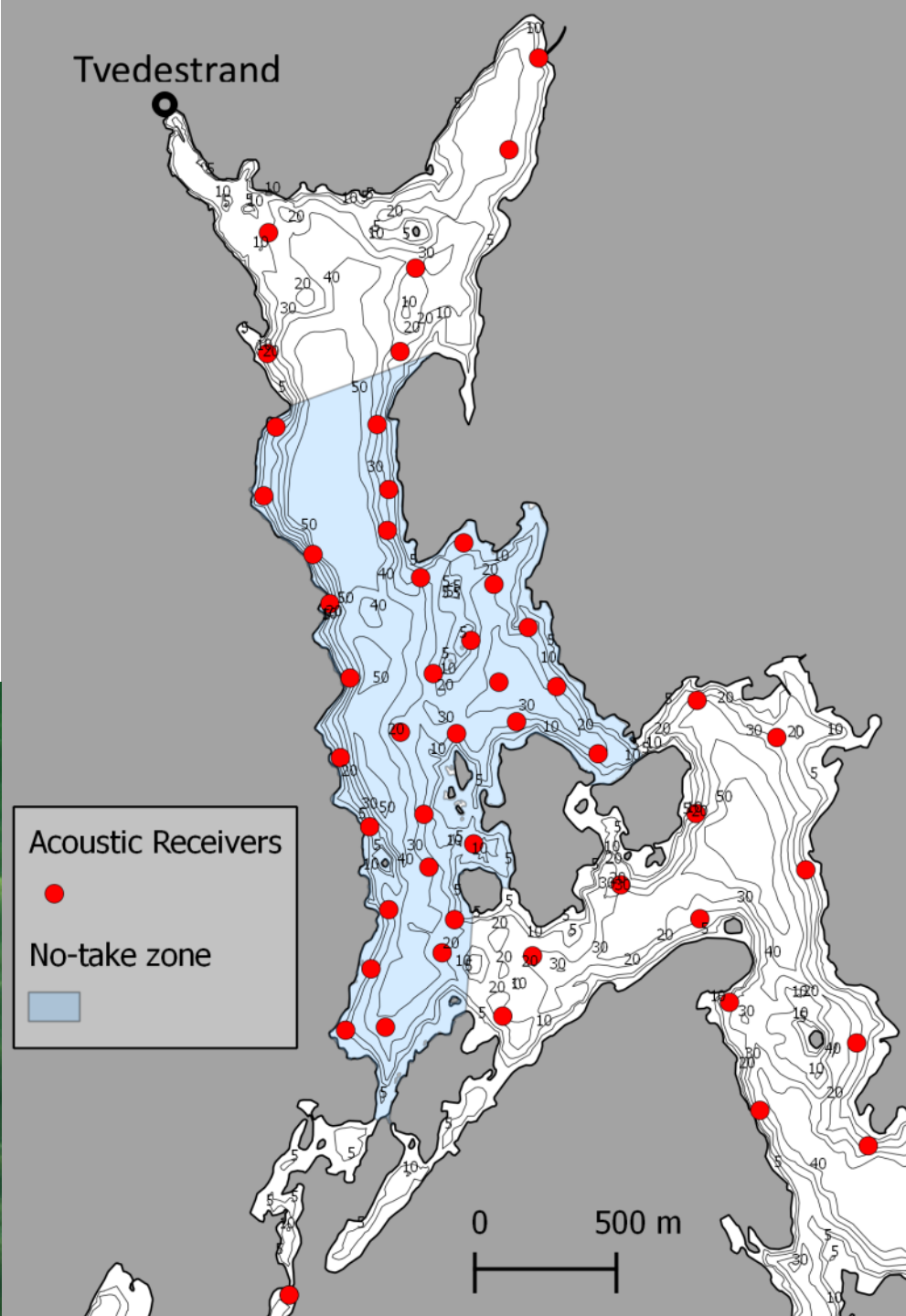


# Sjørreten i sjø: adferd, leveområder og overlevelse

Esben Moland  
Olsen

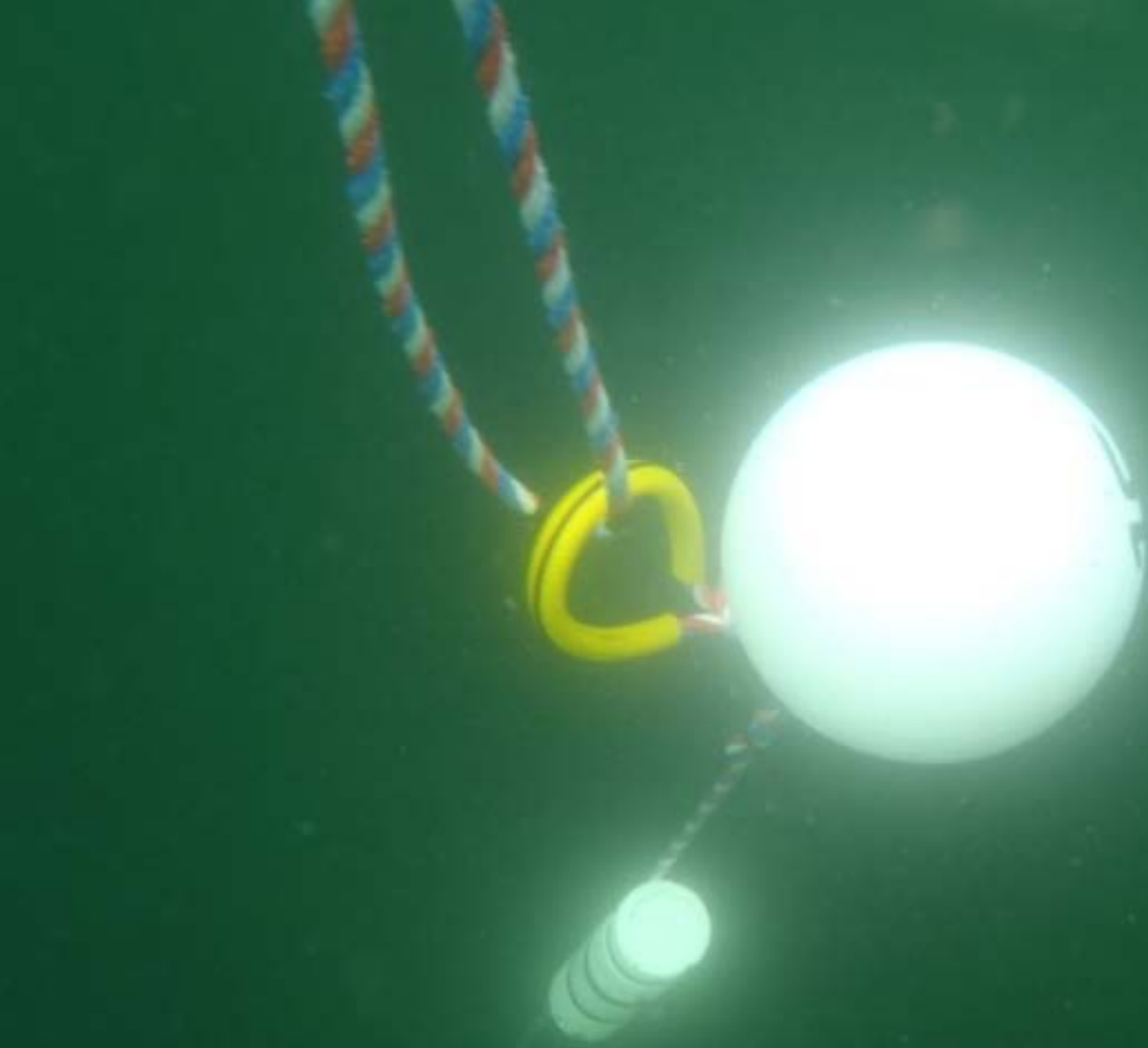


# Telemetry



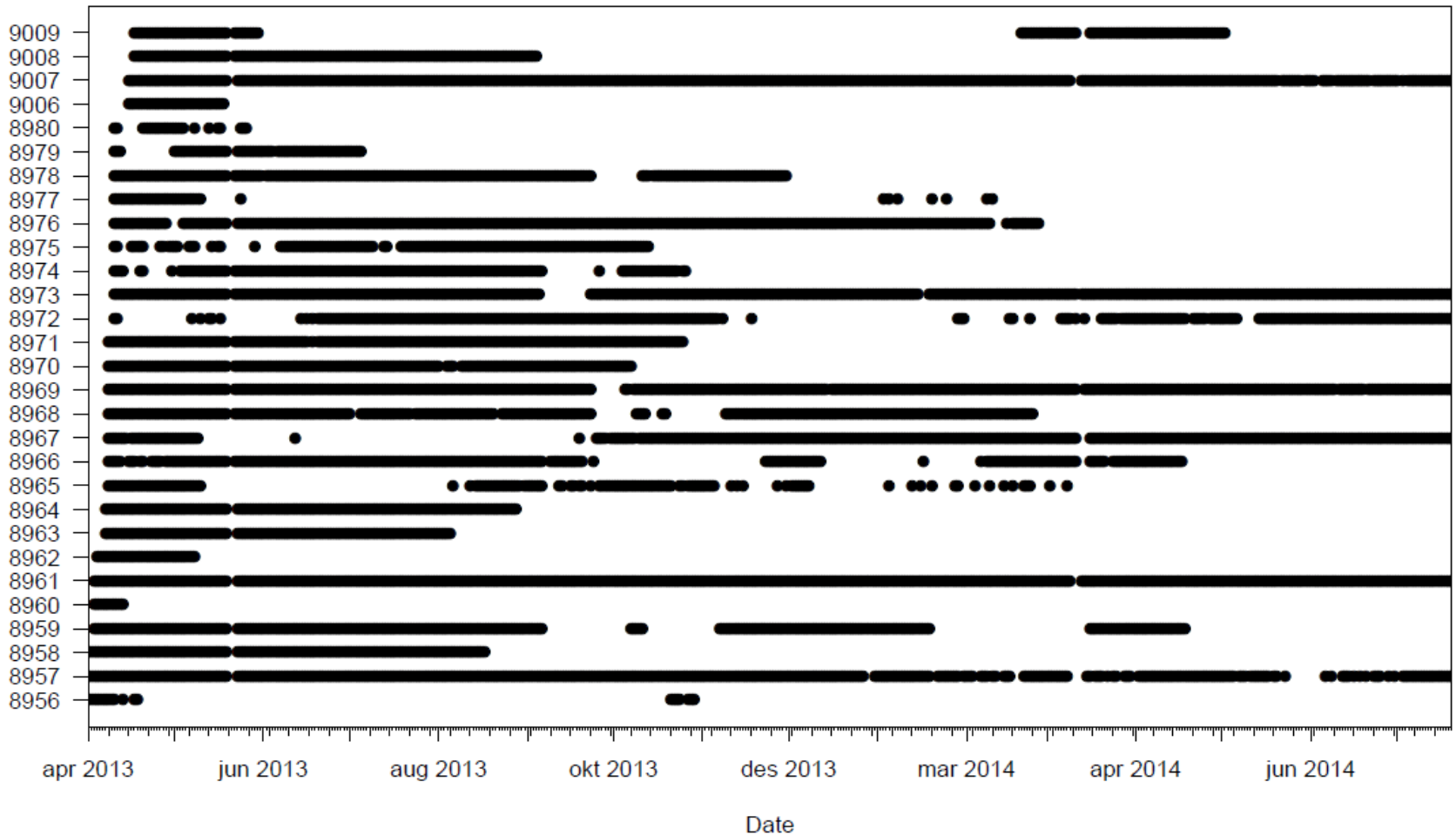






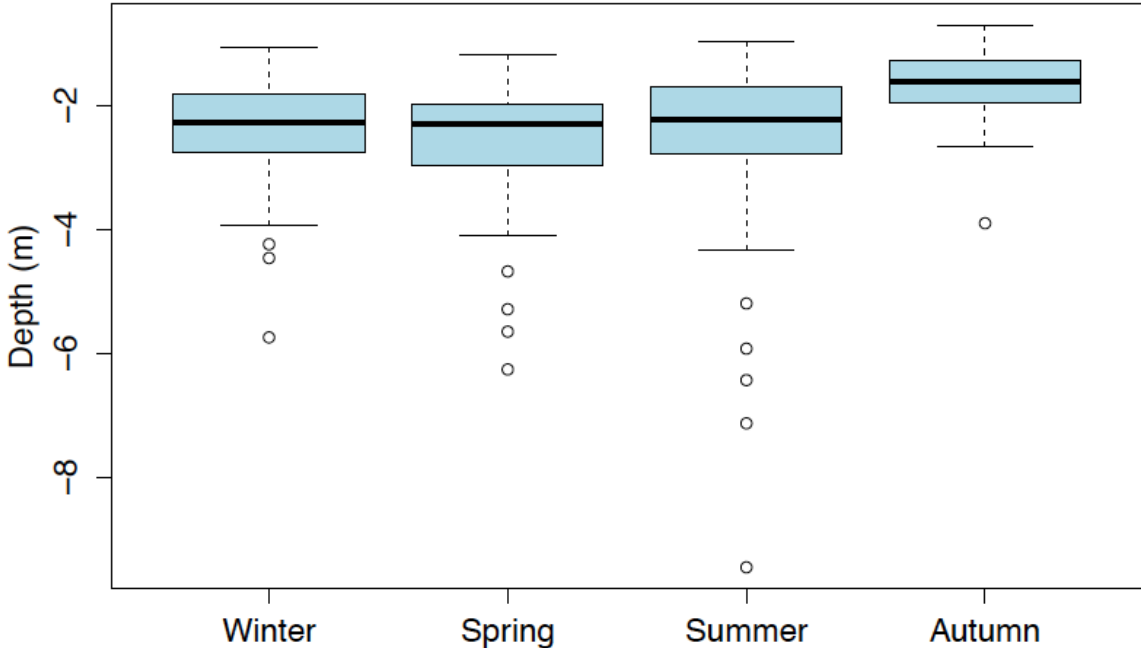
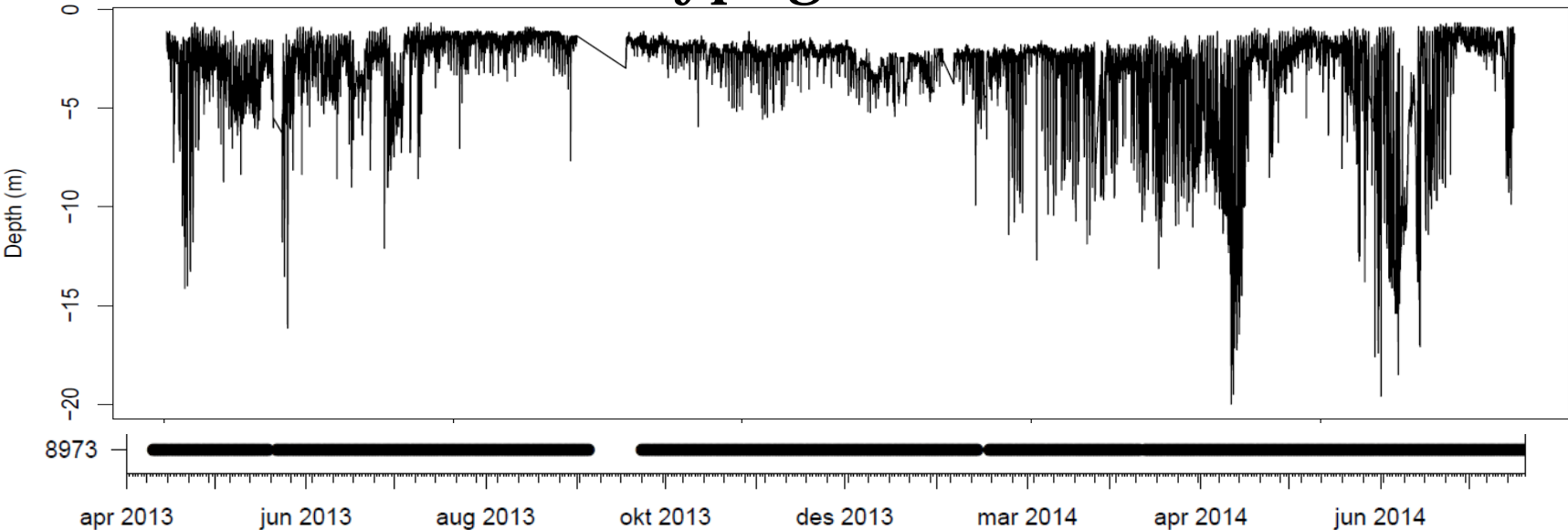


# Oppholdstid i fjorden





# Hvor dybt går ørreten?

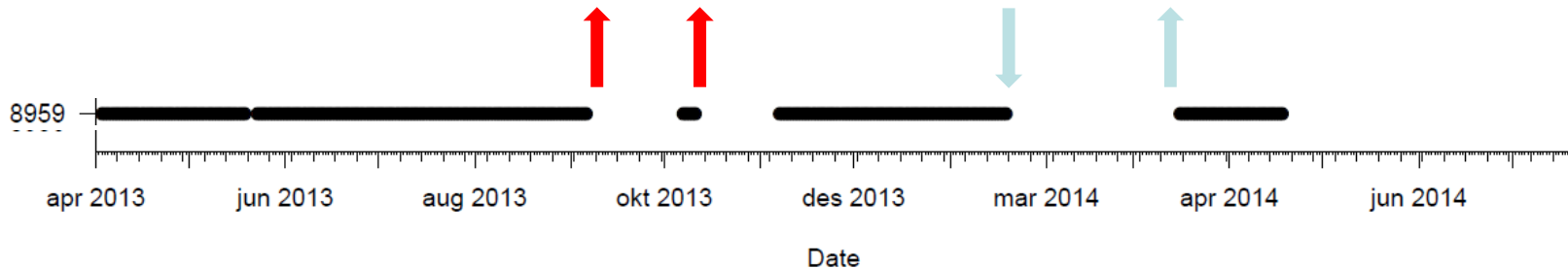
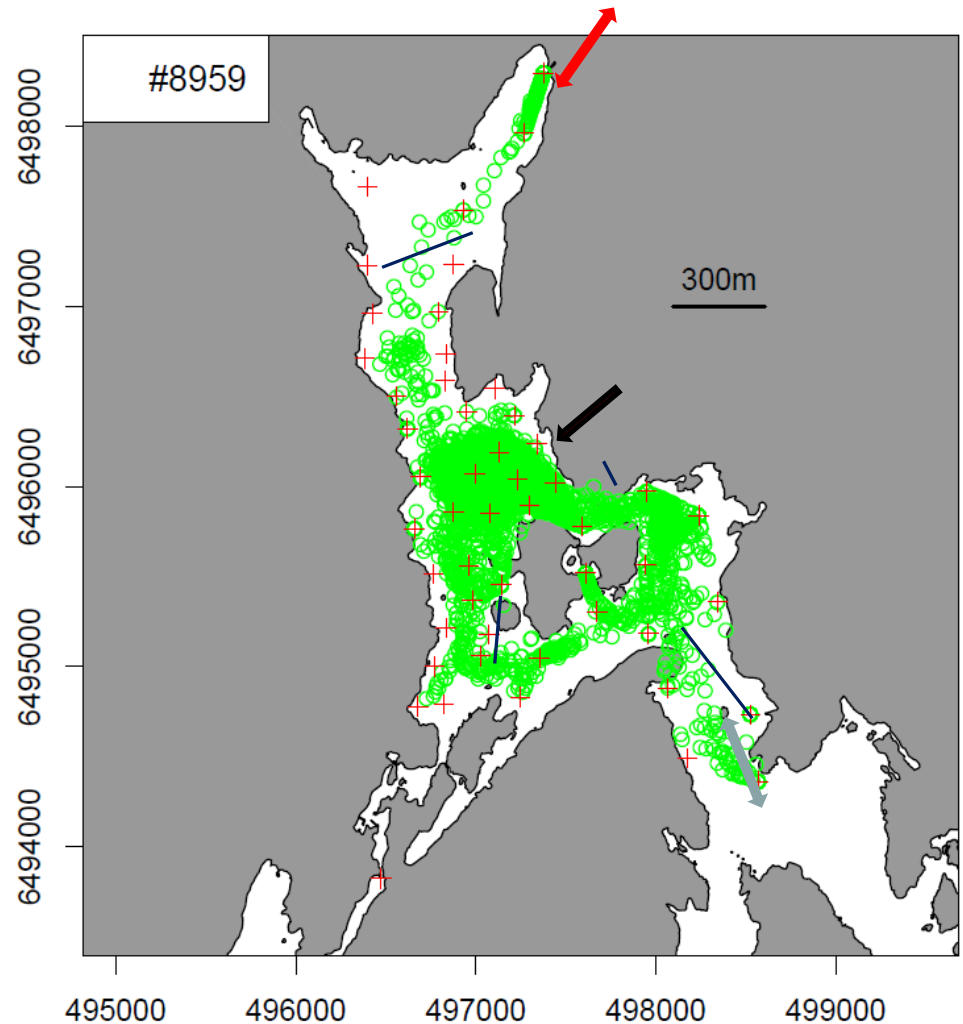




## En død ørret

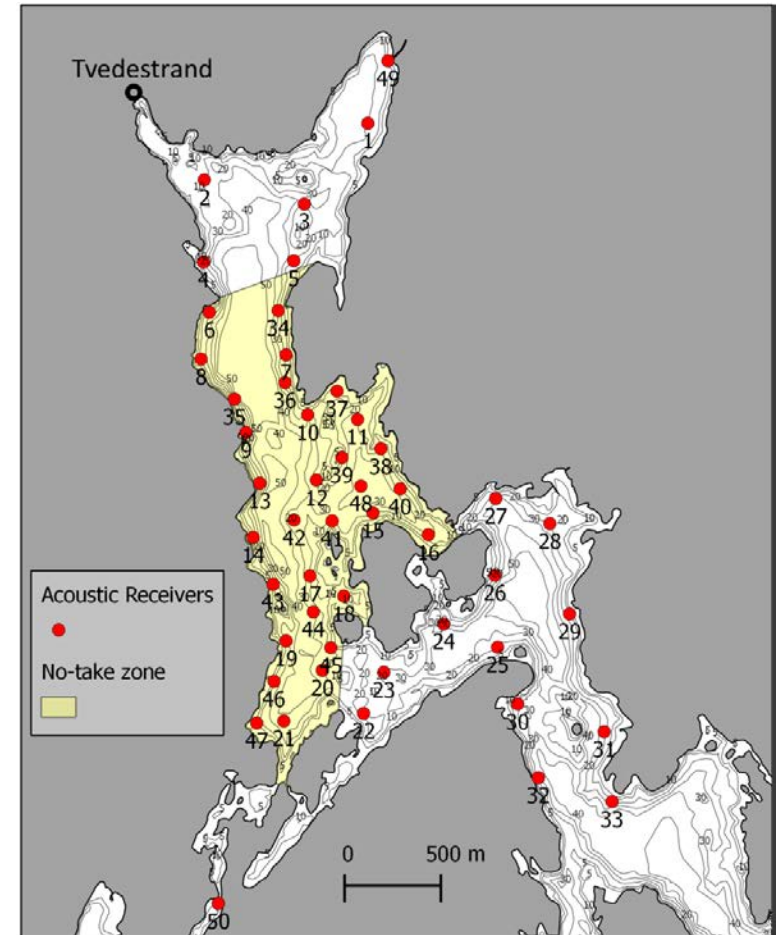
Liv og død til #8959 (35.8 cm):

- Merket mai 2013
- To besøk til gytebekken samme høst
- Forlot fjorden februar 2014
- Returnerte til fjorden i april 2014
- Død i mai 2014



# Ørretens skjebne gjennom et år i sjøen

- I live i fjorden: 6
- Utvandret: 19  $\approx$  32%
- Død i buffersoner: 18
- Død i nullfiskeområdet: 11
- Uklar skjebne: 6
- Total dødelighet: 29  $\approx$  50%



# En tur på gytebekken om høsten varer i snitt 25 dager

Thorbjørnsen, upubliserte data



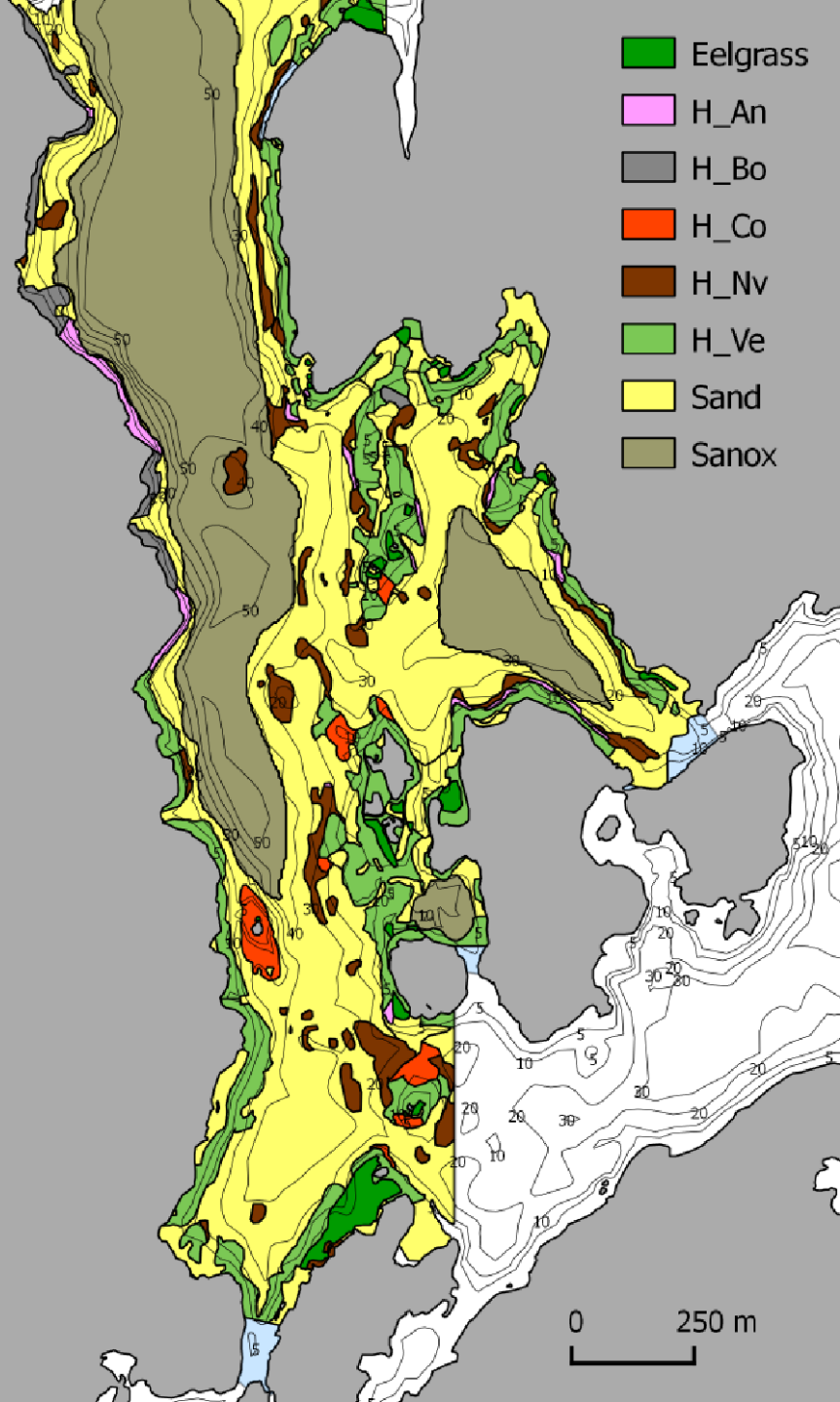
# En tur ut av fjorden varer i snitt 33 dager

Thorbjørnsen, upubliserte data

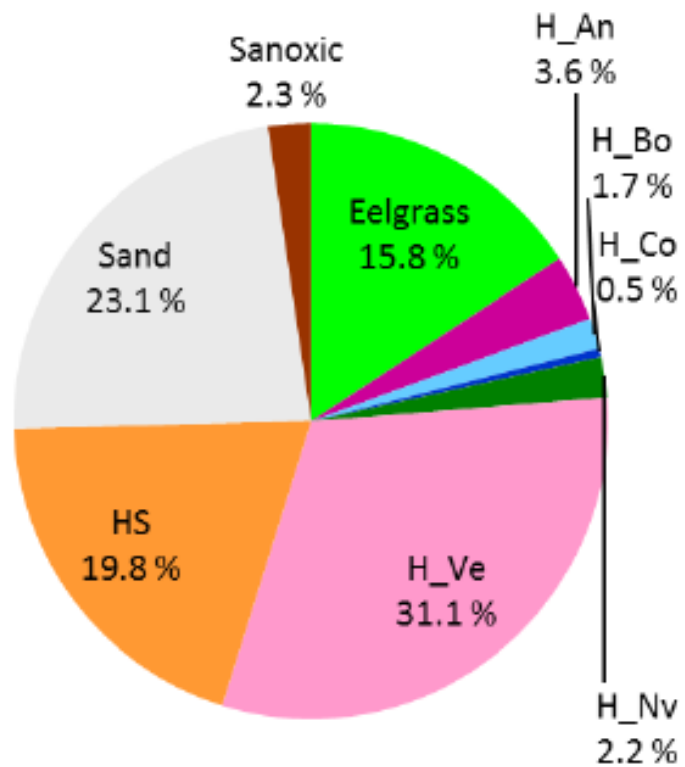


# Viktige leveområder

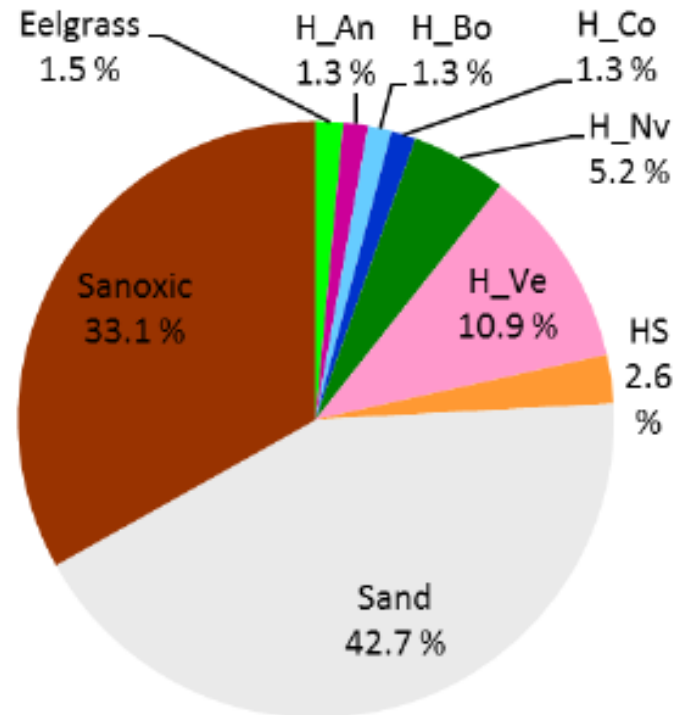




## Mean habitat use

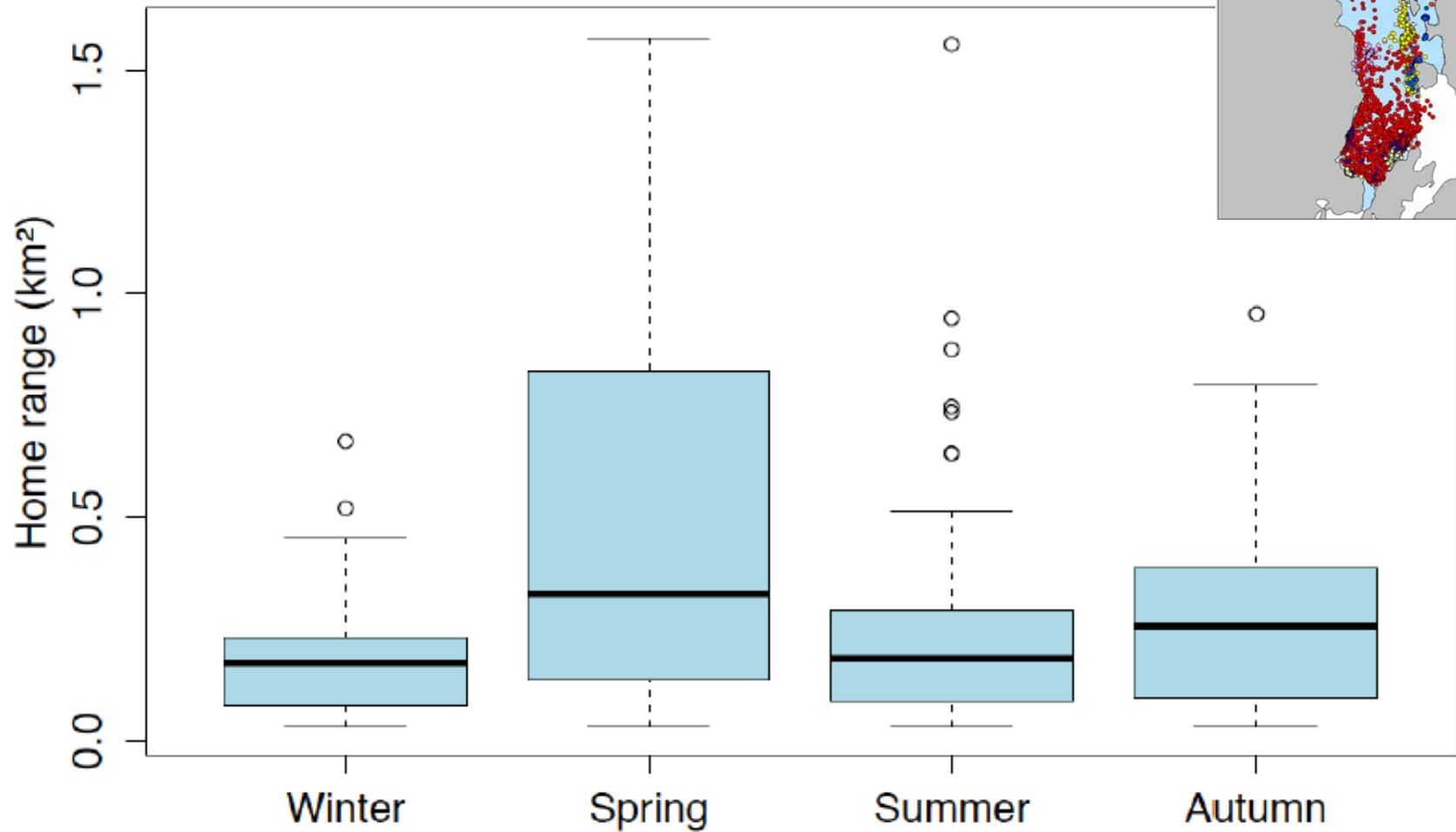


## Habitat availability

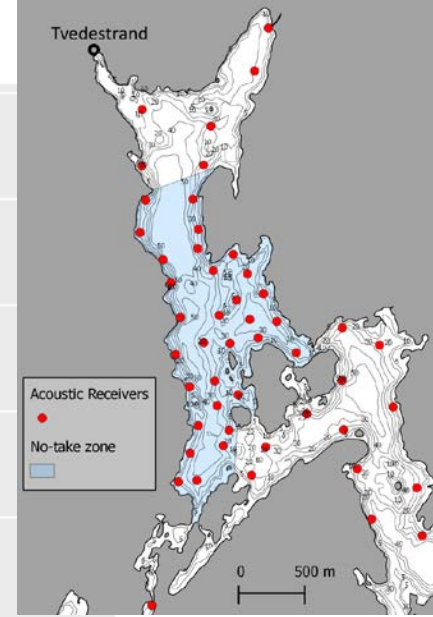
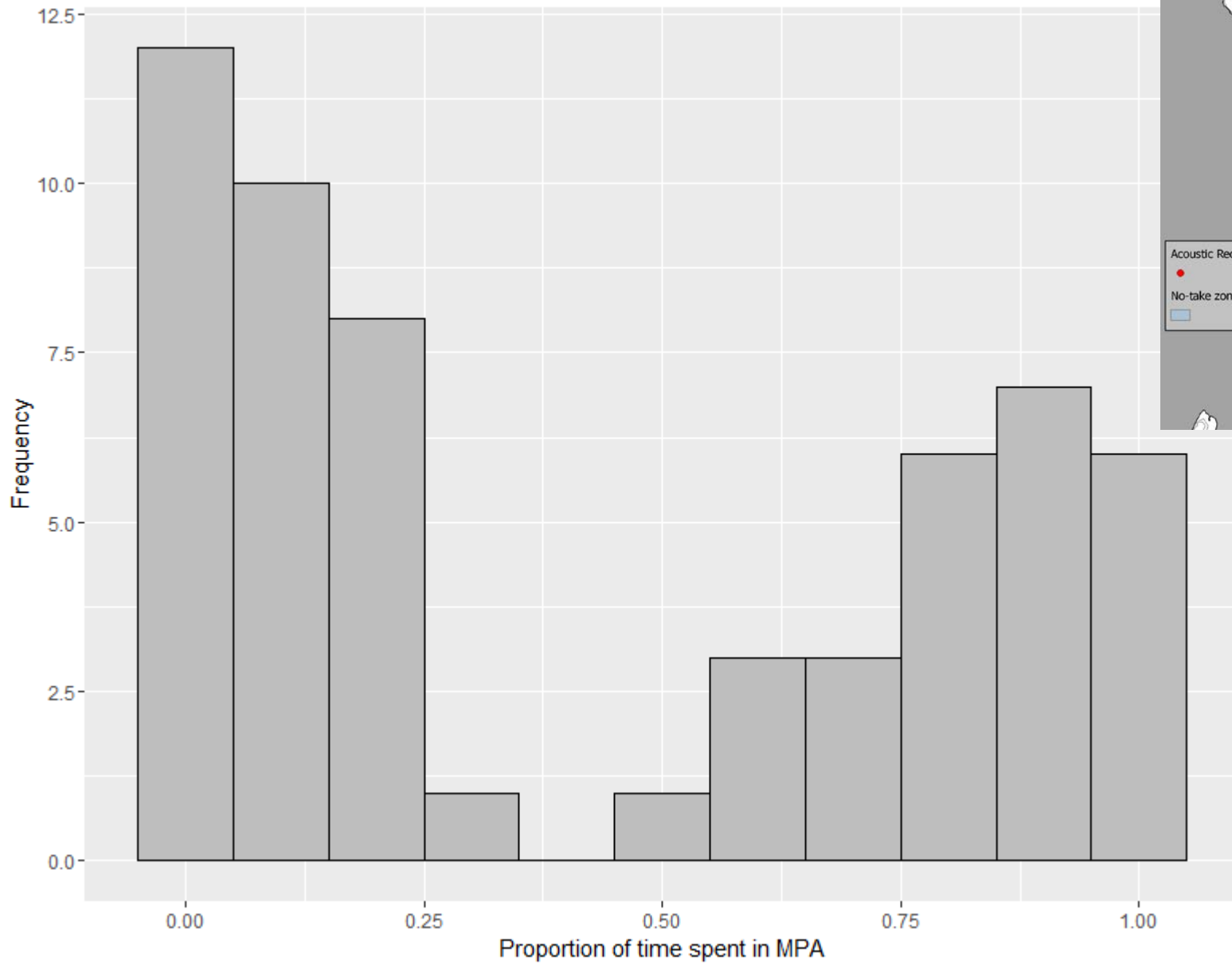




## Home range estimates (km<sup>2</sup>) per seasons



# MPA use for individual fish



Thorbjørnsen, upubliserte data

Takk!

